

Monton Office

0161 789 8383
222 Monton Road, Monton
M30 9LJ
@homeinmonton



1 Brookdale Avenue Audenshaw Manchester M34 5HU

£995 Per calendar month

AVAILABLE NOW! HOME ESTATE AGENTS are delighted to offer for rent this well presented and extended semi detached property which is located with close proximity of the M60 motorway network and in a popular area. The property comprises hallway, lounge, open plan kitchen/diner, shaped landing, two bedrooms and a fitted bathroom suite. The property is located on a cul de sac type street. Externally there is a sizeable rear garden. The property is offered on an un-furnished basis and available NOW! Call HOME On 01617898383 to view!

- AVAILABLE START OF JULY!
- Bay-fronted lounge
- Modern fitted bathroom suite
- Close to M60 motorway links
- Two bedroom end terrace property
- Dining room open with the kitchen
- Garden to the rear
- Hallway
- Two good size bedrooms
- Offered on an un-furnished basis



LOCAL EXPERTS THAT GET YOU MOVING

 www.homeestateagents.com

Lettings info

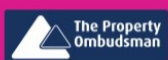
We are advised that the current council tax band is band A.

The current EPC rating is TBC

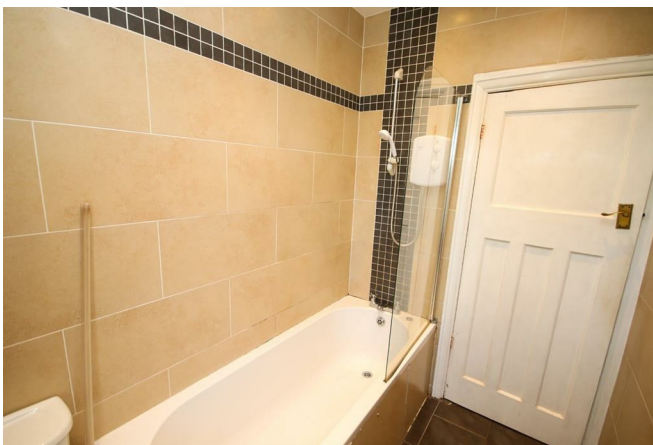


LOCAL EXPERTS THAT GET YOU MOVING

 www.homestateagents.com



Registered Address Vantage House, East Terrace Business Park, Euxton Lane, Euxton PR7 6TB - England
Company Registration numbers Monton - 9262084 Urmston - 04331861 Stretford - 08259553



LOCAL EXPERTS THAT GET YOU MOVING

www.homeestateagents.com



Registered Address Vantage House, East Terrace Business Park, Euxton Lane, Euxton PR7 6TB - England
Company Registration numbers Monton - 9262084 Urmston - 04331861 Stretford - 08259553

Energy Efficiency Rating		
	Current	Potential
Very energy efficient - lower running costs		
(92 plus) A		
(81-91) B		
(69-80) C		
(55-68) D		
(39-54) E		
(21-38) F		
(1-20) G		
Not energy efficient - higher running costs		
England & Wales	EU Directive 2002/91/EC	

Environmental Impact (CO ₂) Rating		
	Current	Potential
Very environmentally friendly - lower CO ₂ emissions		
(92 plus) A		
(81-91) B		
(69-80) C		
(55-68) D		
(39-54) E		
(21-38) F		
(1-20) G		
Not environmentally friendly - higher CO ₂ emissions		
England & Wales	EU Directive 2002/91/EC	

LOCAL EXPERTS THAT GET YOU MOVING

 www.homestateagents.com



Registered Address Vantage House, East Terrace Business Park, Euxton Lane, Euxton PR7 6TB - England
Company Registration numbers Monton - 9262084 Urmston - 04331861 Stretford - 08259553